

ThinkPad.

L13 / L13 Yoga

S2 5th Gen / S2 Yoga 5th Gen

Setup Guide

Guide de configuration

Einrichtungsanleitung

Guida di configurazione

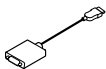
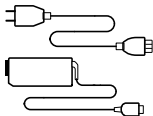
Installatiegids

Manual de Configuração

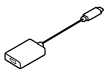
The Lenovo logo is positioned in the bottom right corner of the page. It consists of the word "Lenovo" written in white, bold, sans-serif font, oriented vertically within a red rectangular background.

Unpack

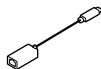
Déballez le produit | Packen Sie Ihren Computer aus | Disimballaggio |
Uitpakken | Desembalar



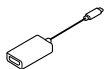
* Lenovo HDMI to VGA Adapter



* Lenovo USB-C to DisplayPort Adapter



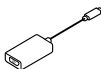
* Lenovo USB-C to Ethernet Adapter



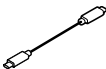
* Lenovo USB-C to HDMI Adapter



* Lenovo USB-C to USB-A Adapter



* Lenovo USB-C to VGA Adapter



* Lenovo USB-C to USB-C Cable

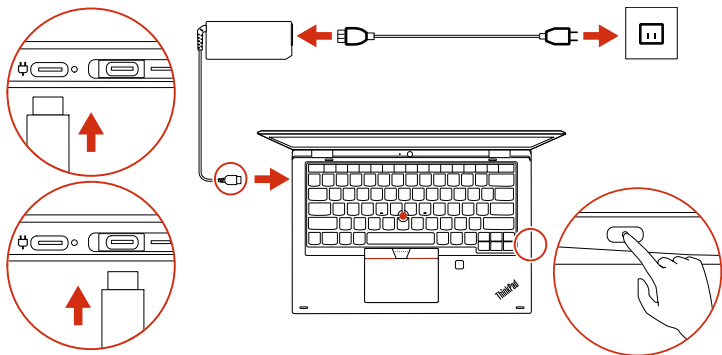


* ThinkPad Ethernet Extension Adapter Gen 2

* For selected models | Sur certains modèles | Bei ausgewählten Modellen |
Per alcuni modelli | Voor bepaalde modellen | Em modelos selecionados

Initial Setup

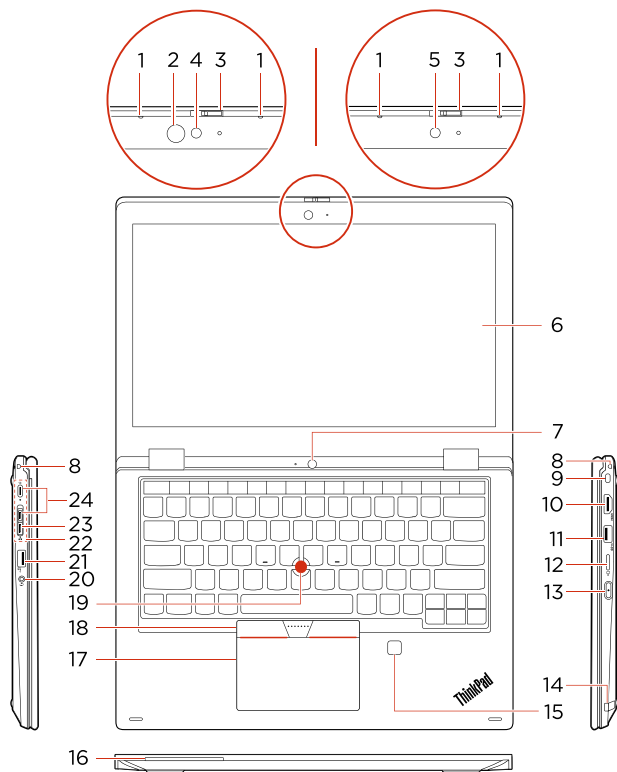
Configuration initiale | Erstkonfiguration | Configurazione iniziale |
Eerste installatie | Configuração inicial



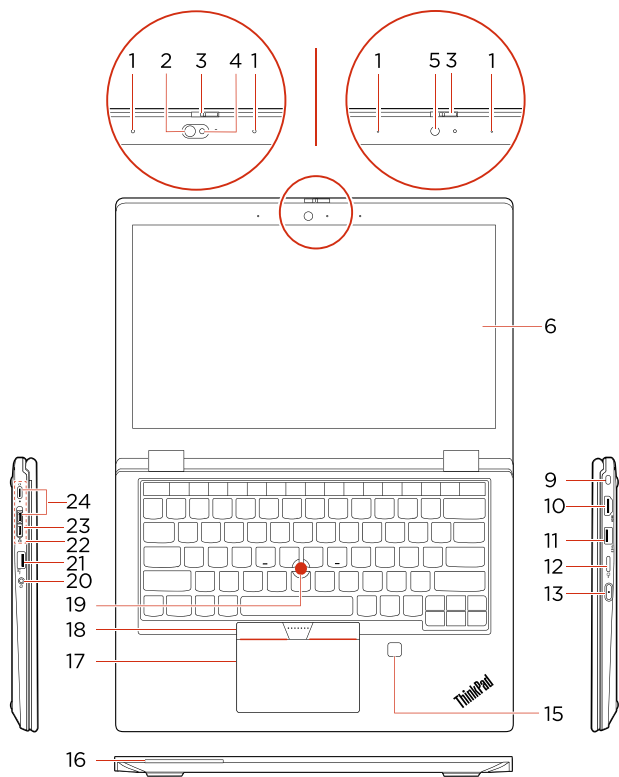
Overview

Présentation | Überblick | Panoramica | Overzicht | Descrição geral

L13 Yoga / S2 Yoga 5th Gen



L13 / S2 5th Gen



- | | |
|------------------------------|--|
| 1. Microphones | 13. Power button |
| * 2. Infrared LED | 14. Pen slot |
| 3. ThinkShutter | * 15. Fingerprint reader |
| * 4. Camera with IR function | * 16. Smart-card slot |
| * 5. Camera | 17. Trackpad |
| * 6. Multi-touch screen | 18. TrackPoint® buttons |
| 7. Rear camera | 19. TrackPoint pointing stick |
| 8. Pen tether hole | 20. Audio connector |
| 9. Security-lock slot | 21. Always On USB 3.1 connector Gen 1 |
| 10. HDMI™ connector | 22. Docking-station connector |
| 11. USB 3.1 connector Gen 1 | 23. Ethernet extension connector Gen 2 |
| 12. microSD card slot | 24. USB-C™ connector (USB 3.1 Gen 1) |

* For selected models

i Read the statement on USB transfer rate in the *User Guide*. Refer to the *Safety and Warranty Guide* for accessing the *User Guide*.

- | | |
|--------------------------------------|---|
| 1. Microphones | 13. Bouton d'alimentation |
| * 2. Voyant infrarouge | 14. Logement du stylet |
| 3. ThinkShutter | * 15. Lecteur d'empreintes digitales |
| * 4. Caméra avec fonction infrarouge | * 16. Logement pour carte à puce |
| * 5. Caméra | 17. Pavé tactile |
| * 6. Écran tactile multipoint | 18. Boutons TrackPoint® |
| 7. Caméra arrière | 19. Dispositif de pointage TrackPoint |
| 8. Orifice de maintien du stylet | 20. Connecteur audio |
| 9. Prise de sécurité | 21. Connecteur Always On USB 3.1 Gen 1 |
| 10. Connecteur HDMI™ | 22. Connecteur de la station d'accueil |
| 11. Connecteur USB 3.1 Gen 1 | 23. Connecteur d'extension Ethernet Gen 2 |
| 12. Logement pour carte microSD | 24. Connecteur USB-C™ (USB 3.1 Gen 1) |

* Sur certains modèles

i Lire la déclaration sur le taux de transfert USB dans le *Guide d'utilisation*. Consulter les *Consignes de sécurité et déclaration de garantie* pour accéder au *Guide d'utilisation*.

For Barcode Position Only

Printed in China
PN: SP40T10043

- | | |
|-----------------------------------|--|
| 1. Mikrofone | 13. Netzschalter |
| * 2. Infrarot-LED | 14. Stifthalter |
| 3. ThinkShutter | * 15. Lesegerät für Fingerabdrücke |
| * 4. Kamera mit IR-Funktion | * 16. Smart-Card-Steckplatz |
| * 5. Kamera | 17. Trackpad |
| * 6. Multitouchscreen | 18. TrackPoint®-Klicktasten |
| 7. Nach hinten zeigende Kamera | 19. TrackPoint-Stift |
| 8. Stiftbefestigung | 20. Audioanschluss |
| 9. Schlitz für Sicherheitsschloss | 21. Always On USB 3.1-Anschluss Gen 1 |
| 10. HDMI™-Anschluss | 22. Andockstationsanschluss |
| 11. USB 3.1-Anschluss Gen 1 | 23. Ethernet-Erweiterungsanschluss Gen 2 |
| 12. microSD-Karten-Steckplatz | 24. USB-C™-Anschluss (USB 3.1 Gen 1) |

* Bei ausgewählten Modellen

i Lesen Sie den Hinweis zur USB-Übertragungsrate im *Benutzerhandbuch*. Informationen zum Zugriff auf das *Benutzerhandbuch* finden Sie im *Handbuch Sicherheit und Garantie*.

- | | |
|----------------------------------|--|
| 1. Microfoni | 13. Pulsante di alimentazione |
| * 2. LED a infrarossi | 14. Slot della penna |
| 3. ThinkShutter | * 15. Lettore di impronte digitali |
| * 4. Fotocamera con funzione IR | * 16. Slot per Smart Card |
| * 5. Fotocamera | 17. Trackpad |
| * 6. Schermo multitouch | 18. Pulsanti TrackPoint® |
| 7. Fotocamera posteriore | 19. Dispositivo di puntamento TrackPoint |
| 8. Foro del laccetto della penna | 20. Connettore audio |
| 9. Slot del blocco di sicurezza | 21. Connettore Always On USB 3.1 Gen 1 |
| 10. Connettore HDMI™ | 22. Connettore della docking station |
| 11. Connettore USB 3.1 Gen 1 | 23. Connettore prolunga Ethernet Gen 2 |
| 12. Slot per schede microSD | 24. Connettore USB-C™ (USB 3.1 Gen 1) |

* Per alcuni modelli

i Leggere le informazioni sulla velocità di trasferimento USB nella *Guida per l'utente*. Fare riferimento alla *Guida in materia di sicurezza e garanzia* per accedere alla *Guida per l'utente*.

- | | |
|-------------------------------|---|
| 1. Microfoons | 13. Aan/uit-knop |
| * 2. Infrarood-lampje | 14. Pensleuf |
| 3. ThinkShutter | * 15. Vingerafdruklezer |
| * 4. Camera met IR-functie | * 16. Sleuf voor Smartcard |
| * 5. Camera | 17. Trackpad |
| * 6. Multitouch-scherm | 18. TrackPoint®-knoppen |
| 7. Camera aan de achterzijde | 19. TrackPoint-aanwijsknopje |
| 8. Gat voor ketting | 20. Audioaansluiting |
| 9. Sleuf voor veiligheidsslot | 21. Always On USB 3.1 Gen 1-aansluiting |
| 10. HDMI™-aansluiting | 22. Aansluiting voor dockingstation |
| 11. USB 3.1 Gen 1-aansluiting | 23. Ethernet-aansluiting Gen 2 |
| 12. microSD-kaartsleuf | 24. USB-C™-aansluiting (USB 3.1 Gen 1) |

* Voor bepaalde modellen

i Lees de verklaring over de USB-overdrachtssnelheid in de *Gebruikershandleiding*. Raadpleeg de *Handleiding veiligheid en garantie* voor toegang tot de *Gebruikershandleiding*.

- | | |
|---------------------------------------|--|
| 1. Microfones | 13. Botão para ligar/desligar |
| * 2. LED infravermelho | 14. Ranhura da caneta |
| 3. ThinkShutter | * 15. Leitor de impressões digitais |
| * 4. Câmara com função de IV | * 16. Ranhura para cartões Smart Card |
| * 5. Câmara | 17. Painel tátil |
| * 6. Ecrã multitoque | 18. Botões do TrackPoint® |
| 7. Câmara posterior | 19. Ponto de deslocamento do rato TrackPoint |
| 8. Orifício para fixar a caneta | 20. Conector de áudio |
| 9. Ranhura de bloqueio para segurança | 21. Conector Always On USB 3.1 Gen 1 |
| 10. Conector HDMI™ | 22. Conector de base de expansão |
| 11. Conector USB 3.1 Gen 1 | 23. Conector de extensão Ethernet Gen 2 |
| 12. Ranhura para cartões microSD | 24. Conector USB-C™ (USB 3.1 Gen 1) |

* Em modelos selecionados

i Leia a declaração relativa à velocidade de transferência USB no *Manual do Utilizador*. Consulte o *Manual de Segurança e Garantia* para aceder ao *Manual do Utilizador*.

Additional information

Informations complémentaires | Zusätzliche Informationen | Informazioni aggiuntive | Aanvullende informatie | Informações adicionais

Specific absorption rate for European Union

YOUR DEVICE MEETS INTERNATIONAL GUIDELINES FOR EXPOSURE TO RADIO WAVES.

The Europe 10g Specific Absorption Rate (SAR) limit for mobile devices is 2.0 W/kg. To view your product specific SAR value, go to <https://support.lenovo.com/us/en/solutions/sar>.

If you are interested in further reducing your RF exposure then you can easily do so by limiting your usage or simply keeping the device away from the body.

European Union – compliance with the Radio Equipment Directive

Hereby, Lenovo (Singapore) Pte. Ltd., declares that the radio equipment type ThinkPad L13, ThinkPad L13 Yoga, ThinkPad S2 5th Gen, and ThinkPad S2 Yoga 5th Gen are in compliance with Directive 2014/53/EU.

The full text of the system EU declaration of conformity and the EU wireless module declarations are available at the following Internet address:

<https://www.lenovo.com/us/en/compliance/eu-doc>

This radio equipment operates with the following frequency bands and maximum radio-frequency power:

Technology	Frequency band [MHz]	Maximum transmit power
WLAN 802.11b/g/n/ax	2400 - 2483.5	< 20 dBm
WLAN 802.11a/n/ac/ax	5150 - 5725	< 23 dBm
WLAN 802.11a/n/ac/ax	5725 - 5875	< 13.98 dBm
Bluetooth BR/EDR/LE	2400 - 2483.5	< 20 dBm

Taux d'absorption spécifique pour l'Union européenne

VOTRE PÉRIPHÉRIQUE EST CONFORME AUX DIRECTIVES INTERNATIONALES RELATIVES À L'EXPOSITION AUX ONDES RADIOÉLECTRIQUES.

La limite de débit d'absorption spécifique (DAS) 10g pour l'Europe pour les périphériques mobiles est de 2,0 W/kg. Pour afficher la valeur DAS

spécifique à votre produit, accédez à <https://support.lenovo.com/us/en/solutions/sar>.

Si vous souhaitez réduire davantage votre exposition aux fréquences radio, vous pouvez aisément limiter votre utilisation ou bien vous maintenir à distance de votre périphérique.

Union européenne – Conformité à la directive concernant l'équipement radio

Lenovo (Singapore) Pte. Ltd. déclare par la présente que les catégories d'équipement radio de type ThinkPad L13, ThinkPad L13 Yoga, ThinkPad S2 5th Gen et ThinkPad S2 Yoga 5th Gen are sont conformes à la Directive 2014/53/EU.

Le texte complet de la déclaration européenne de conformité et des déclarations européennes concernant les modules sans fil sont disponibles à l'adresse Internet suivante :

<https://www.lenovo.com/us/en/compliance/eu-doc>

Cet équipement radio utilise les bandes de fréquences suivantes et une alimentation à haute fréquence maximum :

Technologie	Bande de fréquence [MHz]	Niveau de puissance de transmission maximal
WLAN 802.11b/g/n/ax	2 400 - 2 483,5	< 20 dBm
WLAN 802.11a/n/ac/ax	5 150 - 5 725	< 23 dBm
WLAN 802.11a/n/ac/ax	5 725 - 5 875	< 13,98 dBm
Bluetooth BR/EDR/LE	2 400 - 2 483,5	< 20 dBm

Spezifische Absorptionsrate für die Europäische Union

IHR GERÄT ERFÜLLT DIE INTERNATIONALEN RICHTLINIEN FÜR DIE BELASTUNG DURCH FUNKWELLEN.

Die europäische SAR-Obergrenze für mobile Geräte beträgt 2,0 W/kg (10 g). Informationen zum SAR-Wert Ihres Produkts finden Sie unter <https://support.lenovo.com/us/en/solutions/sar>.

Wenn Sie die Belastung durch Funkwellen weiter verringern möchten, können Sie dies ganz einfach tun, indem Sie Ihre Nutzung einschränken oder das Gerät ganz einfach von Ihrem Körper fernhalten.

Europäische Union – Erfüllung der Funkanlagen-Richtlinie

Lenovo (Singapore) Pte. Ltd. erklärt hiermit, dass die Funkgeräte vom Typ ThinkPad L13, ThinkPad L13 Yoga, ThinkPad S2 5th Gen und ThinkPad S2 Yoga 5th Gen der EU-Richtlinie 2014/53/EU entsprechen.

Die vollständige EU-Konformitätserklärung für das System sowie die EU-Richtlinien für drahtlose Module finden Sie unter folgender Internetadresse: <https://www.lenovo.com/us/en/compliance/eu-doc>

Dieses Funkgerät arbeitet mit den folgenden Frequenzbändern und der folgenden maximalen HF-Leistung:

Technologie	Frequenzband [MHz]	Maximale Übertragungleistung
WLAN 802.11b/g/n/ax	2400 - 2483,5	< 20 dBm
WLAN 802.11a/n/ac/ax	5150 - 5725	< 23 dBm
WLAN 802.11a/n/ac/ax	5725 - 5875	< 13,98 dBm
Bluetooth BR/EDR/LE	2400 - 2483,5	< 20 dBm

SAR (Specific Absorption Rate) per l'Unione Europea

IL DISPOSITIVO RISPETTA LE LINEE GUIDA INTERNAZIONALI DI ESPOSIZIONE ALLE ONDE RADIO.

In Europa il limite SAR rispetto a 10 g di tessuto per i dispositivi mobili è di 2 W/kg. Per visualizzare il valore SAR specifico del prodotto, visitare il sito <https://support.lenovo.com/us/en/solutions/sar>.

È possibile ridurre facilmente l'esposizione alle frequenze radio limitando l'uso dei dispositivi o mantenendoli a una corretta distanza dal corpo.

Unione Europea - Conformità alla direttiva sulle apparecchiature radio per l'Unione Europea

Pertanto, Lenovo (Singapore) Pte. Ltd., dichiara che il tipo di apparecchiatura radio ThinkPad L13, ThinkPad L13 Yoga, ThinkPad S2 5th Gen e ThinkPad S2 Yoga 5th Gen è conforme alla direttiva 2014/53/UE.

Il testo integrale della dichiarazione di conformità dei sistemi dell'UE e delle dichiarazioni dei moduli wireless dell'UE sono disponibili al seguente indirizzo Internet:

<https://www.lenovo.com/us/en/compliance/eu-doc>

Questa apparecchiatura radio funziona con le seguenti bande di frequenza e di alimentazione a radiofrequenza massime:

Tecnologia	Banda di frequenza [Mhz]	Potenza di trasmissione massima
WLAN 802.11b/g/n/ax	2400 - 2483,5	< 20 dBm
WLAN 802.11a/n/ac/ax	5150 - 5725	< 23 dBm
WLAN 802.11a/n/ac/ax	5725 - 5875	< 13,98 dBm
Bluetooth BR/EDR/LE	2400 - 2483,5	< 20 dBm

Specifieke absorptie snelheid voor Europese Unie

DIT APPARAAT VOLDOET AAN DE INTERNATIONALE RICHTLIJNEN VOOR BLOOTSTELLING AAN RADIOGOLVEN.

De Europese 10g Specific Absorption Rate (SAR) voor mobiele apparatuur is 2,0 W/kg. Ga om uw product specifieke SAR-waarde te bekijken naar <https://support.lenovo.com/us/en/solutions/sar>.

Als u de RF-blootstelling verder wilt verlagen, kunt u het gebruik van het apparaat beperken of het apparaat uit de buurt van het lichaam houden.

Europese Unie - naleving van de richtlijnen inzake radioapparatuur

Hierbij verklaart Lenovo (Singapore) Pte. Ltd. dat de radioapparatuur van het type ThinkPad L13, ThinkPad L13 Yoga, ThinkPad S2 5th Gen en ThinkPad S2 Yoga 5th Gen voldoet aan EU-richtlijn 2014/53/UE.

De volledige tekst van de EU-verklaring van conformiteit van het systeem en de EU-verklaringen inzake draadloze modules zijn beschikbaar op het volgende internetadres: <https://www.lenovo.com/us/en/compliance/eu-doc>

Deze radioapparatuur werkt met de volgende frequentiebanden en maximaal radiofrequentievermogen:

Technologie	Frequentieband [MHz]	Maximaal zendvermogen
WLAN 802.11b/g/n/ax	2400 - 2483,5	< 20 dBm
WLAN 802.11a/n/ac/ax	5150 - 5725	< 23 dBm
WLAN 802.11a/n/ac/ax	5725 - 5875	< 13,98 dBm
Bluetooth BR/EDR/LE	2400 - 2483,5	< 20 dBm

Taxa de absorção específica para a União Europeia

O SEU DISPOSITIVO CUMPRE AS DIRETRIZES INTERNACIONAIS PARA EXPOSIÇÃO A ONDAS DE RÁDIO.

O limite de 10g de Taxa de Absorção Específica na Europa para dispositivos móveis é de 2,0 W/kg. Para ver o valor de Taxa de Absorção Específica do seu produto, acesse a <https://support.lenovo.com/us/en/solutions/sar>.

Se estiver interessado em reduzir mais a sua exposição a RF, poderá efetuá-lo facilmente limitando a utilização ou simplesmente mantendo o dispositivo afastado do corpo.

União Europeia - conformidade com a Diretiva de Equipamento de Rádio

Pelo presente, a Lenovo (Singapore) Pte. Ltd. declara que o tipo de equipamento de rádio do ThinkPad L13, ThinkPad L13 Yoga, ThinkPad S2 5th Gen e ThinkPad S2 Yoga 5th Gen está em conformidade com a Diretiva 2014/53/UE.

O texto integral da declaração de conformidade da UE do sistema e as declarações da UE do módulo sem fios estão disponíveis no seguinte endereço na Internet:

<https://www.lenovo.com/us/en/compliance/eu-doc>

Este equipamento de rádio funciona com as seguintes bandas de frequência e potência de radiofrequência máxima:

Tecnologia	Banda de frequência [MHz]	Energia máxima transmitida
WLAN 802.11b/g/n/ax	2400 - 2483,5	< 20 dBm
WLAN 802.11a/n/ac/ax	5150 - 5725	< 23 dBm
WLAN 802.11a/n/ac/ax	5725 - 5875	< 13,98 dBm
Bluetooth BR/EDR/LE	2400 - 2483,5	< 20 dBm

E-manual

Manuel électronique | E-Handbuch | Manuale elettronico |
E-handleiding | Manual eletrônico



First Edition (October 2019)

© Copyright Lenovo 2019.

LIMITED AND RESTRICTED RIGHTS NOTICE: If data or software is delivered pursuant to a General Services Administration "GSA" contract, use, reproduction, or disclosure is subject to restrictions set forth in Contract No. GS-35F-05925.

Reduce | Reuse | Recycle

